

## 3 Bedroom Home w/Fireplace and Huge Deck



**3029 Arthur St NE  
Minneapolis**

### 1,812 Finished SF of Airy Living Space

Beautiful home with just a hint of mid-century sophistication. Hardwood floors, a bay window, subtle arches and a huge window wall overlooking the back deck and yard give this home an eclectic best-of-both worlds feel.

The kitchen and dining areas are open so you can converse while preparing meals, and the Large living room is accessible from the entry area and a hallway near the center of the house.

Two bedrooms and a bath round out the first floor—one bedroom opens on to the large deck and is perfect for a home office! The entire upper level is devoted to the master suite, including two walk-in closets. The finished basement includes a recreation and laundry room. An expansive, two-section tuck under garage is accessed from the basement.



### Beautiful home in a prime NE Location!



**Rock Solid  
COMPANIES**

*Providing Exceptional Personal Service*

[www.rocksolidcos.com](http://www.rocksolidcos.com)

*Delivering Exceptional Positive Results*

**ROCK SOLID Companies  
is Your FULL SERVICE  
Real Estate Brokerage**

Commercial, Property Management,  
Troubled Assets, Court Receivership,  
Investment/Equity, 1031 Exchange  
Residential, Property Development  
and Vacation/Coastal Properties.

Licensed in Minnesota & Florida

Contact:

**Kurt Nowacki** Realtor®

**612.227.6163**

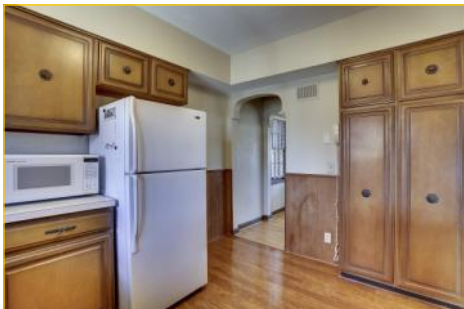
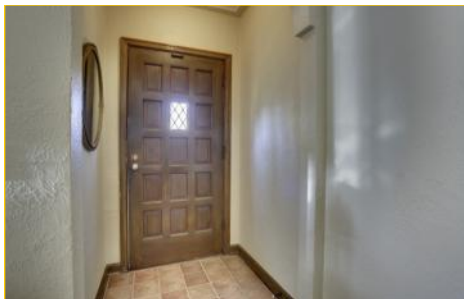
**kurt@rocksolidcos.com**

7078 E. Fish Lake Rd., Maple Grove, MN 55311 Main: 612.435.7770 Fax: 612.435.7771

# Eclectic Mix of Vintage and Modern Details

**3029 Arthur St NE  
Minneapolis**

## Home Details



<b>Listing Price:</b>	\$234,777	
<b>Location:</b>	3029 Arthur Street NE, Minneapolis MN 55418	
<b>PID Number:</b>	0102924440088	
<b>2014 Total Tax:</b>	\$2,230	
<b>Legal Desc:</b>	BLOCK 004 THE SOO-PACIFIC ADDN TO MPLS N 10 FT OF LOT 22 AND S 35 FT OF LOT 23	
<b>Zoning:</b>	Residential-Single	
<b>Topography:</b>	Flat, grassy, trees	
<b>Utilities:</b>	Water Sewer Fuel Heat	City water, connected City Sewer, connected Natural Gas Forced Air
<b>Number of Bldgs:</b>	1—Home and attached, tuck under garage	
<b>Number of Floors:</b>	2 plus basement	
<b>Total Finished SF:</b>	1,812	
<b>Acres:</b>	0.14 Acres—45' x 127'	
<b>Building Type:</b>	Stucco, brick	
<b>Year Built:</b>	1941	
<b>Neighboring:</b>	Single family residential	
<b>General:</b>	Huge deck above the garage. Master suite has two walk-in closets, extra storage and sitting area. Hardwood floors, Bay window in the living room. Beautiful home!!	



**Rock Solid  
COMPANIES**

*Providing Exceptional Personal Service*

[www.rocksolidcos.com](http://www.rocksolidcos.com)

*Delivering Exceptional Positive Results*

**ROCK SOLID Companies  
is Your FULL SERVICE  
Real Estate Brokerage**

Commercial, Property Management,  
Troubled Assets, Court Receivership,  
Investment/Equity, 1031 Exchange  
Residential, Property Development  
and Vacation/Coastal Properties.  
Licensed in Minnesota & Florida

Contact:

**Kurt Nowacki** Realtor®

**612.227.6163**

**kurt@rocksolidcos.com**

7078 E. Fish Lake Rd., Maple Grove, MN 55311 Main: 612.435.7770 Fax: 612.435.7771



# Great NE Neighbors and Community Spirit

**3029 Arthur St NE  
Minneapolis**

## Radius Demographics

### Community-at-a-Glance

County Seat: **Hennepin**

#### 3 Mile Radius

Population:  
**116,700**

Median Age:  
**32.6**

Average Family Size:  
**2.94**

Median Home Value:  
**\$144,526**

Median Household Income:  
**\$52,005**

Commute Time (minutes):  
**19.9**

*\*2010 US Census Data & Esri Forecasts*

The information herein was obtained from sources deemed to be reliable. The information includes projections, assumptions and estimates as examples only and of a forecast nature yet may not represent actual, current or future performance. We make no guarantees or warranties. It is submitted subject to the possibility of withdrawal without notice, errors, change of price, omissions, financing, rental or other conditions. You and your tax and legal advisors should conduct your own investigation of the property and contemplated or proposed transactions. Copyright 2014 ROCK SOLID Companies

*Last Updated: Thursday, November 20, 2014*

General Characteristics	1 Mile	3 Mile	5 Mile
Total population	13,573	116,700	369,132
<i>Male</i>	6,598	58,479	184,675
<i>Female</i>	6,975	58,221	184,457
Median age (years)	40.8	32.6	32.5
<i>Under 5 years</i>	959	6,442	23,880
<i>18 years and over</i>	11,015	97,963	296,495
<i>65 years and over</i>	1,613	12,286	37,845
Average household size	2.23	2.20	2.24
Average family size	2.93	2.94	3.10
Total housing units	6,451	54,664	168,300
Social Characteristics	1 Mile	3 Mile	5 Mile
Pop. 25+ by Educational Attainment	9,982	72,588	241,403
<i>HS graduate</i>	22.8	22.6	23.1
<i>Associate degree</i>	8.0	7.3	7.1
<i>Bachelor's degree</i>	26.1	24.3	23.2
Family Households	3,105	21,762	70,927
Economic characteristics	1 Mile	3 Mile	5 Mile
16+ In labor force	92.4%	91.5%	89.9%
Average travel time to work (minutes)	21.4	19.9	21.0
Median household income (dollars)	61,493	52,005	50,574
Average household Income (dollars)	68,929	63,797	63,708
Per capita income (dollars)	32,272	28,937	27,334
Housing Characteristics	1 Mile	3 Mile	5 Mile
Owner-occupied homes	4,160	25,064	154,246
<i>Median value (dollars)</i>	145,216	144,526	142,431
Renter-occupied homes	1,887	24,394	80,290

**Rock Solid  
COMPANIES**

*Providing Exceptional Personal Service*

[www.rocksolidcos.com](http://www.rocksolidcos.com)

*Delivering Exceptional Positive Results*

**ROCK SOLID Companies  
is Your FULL SERVICE  
Real Estate Brokerage**

Commercial, Property Management,  
Troubled Assets, Court Receivership,  
Investment/Equity, 1031 Exchange  
Residential, Property Development  
and Vacation/Coastal Properties.

Licensed in Minnesota & Florida

Contact:

**Kurt Nowacki** Realtor®

**612.227.6163**

**kurt@rocksolidcos.com**

7078 E. Fish Lake Rd., Maple Grove, MN 55311 Main: 612.435.7770 Fax: 612.435.7771

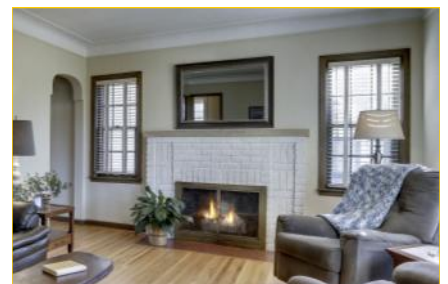
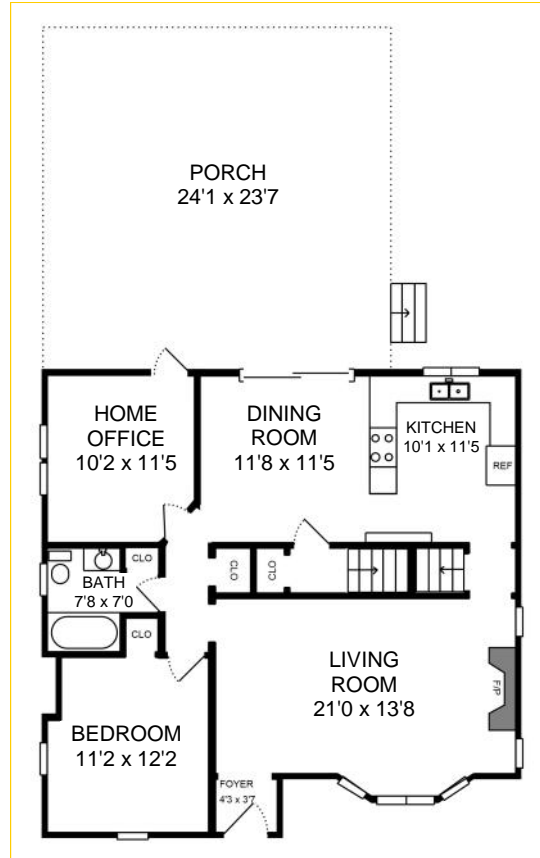
# Open Plan Kitchen & Dining with Loads of Natural Light

**3029 Arthur St NE  
Minneapolis**

## Ground Level

### Simple floor plan for easy access to every room.

Access to either side of the ground level is available from the both sides of the living room. The combined kitchen and dining area opens onto the expansive back porch created by the tuck under garage. One bedroom also has access to the porch, making it the ideal home office.



**Rock Solid  
COMPANIES**

*Providing Exceptional Personal Service*

[www.rocksolidcos.com](http://www.rocksolidcos.com)

*Delivering Exceptional Positive Results*

**ROCK SOLID Companies  
is Your FULL SERVICE  
Real Estate Brokerage**

Commercial, Property Management,  
Troubled Assets, Court Receivership,  
Investment/Equity, 1031 Exchange  
Residential, Property Development  
and Vacation/Coastal Properties.  
Licensed in Minnesota & Florida

Contact:

**Kurt Nowacki** Realtor®

**612.227.6163**

**kurt@rocksolidcos.com**

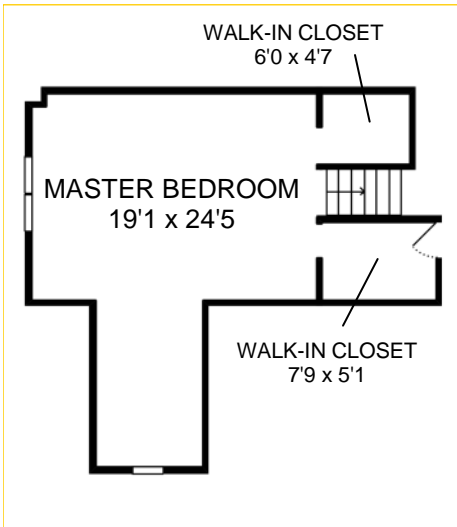
7078 E. Fish Lake Rd., Maple Grove, MN 55311 Main: 612.435.7770 Fax: 612.435.7771



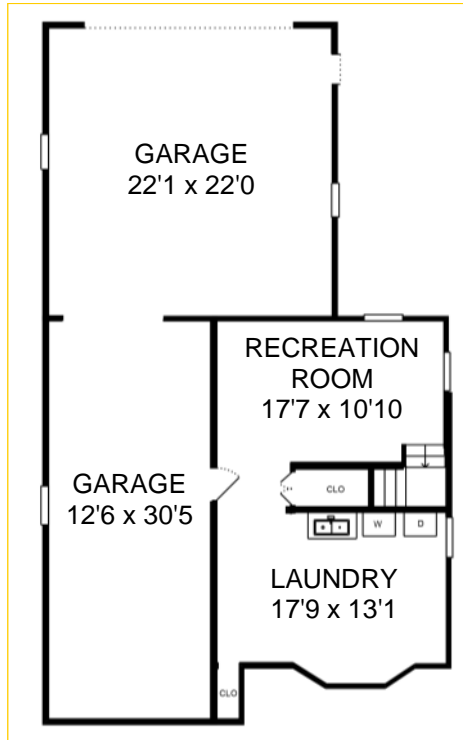
# Huge Master Bedroom Great Outdoor Spaces

3029 Arthur St NE  
Minneapolis

## Upper Level



## Basement and Tuck Under Garage



## Porch and Outdoor Space



**Rock Solid**  
COMPANIES

Providing Exceptional Personal Service

[www.rocksolidcos.com](http://www.rocksolidcos.com)

Delivering Exceptional Positive Results

ROCK SOLID Companies  
is Your FULL SERVICE  
Real Estate Brokerage

Commercial, Property Management,  
Troubled Assets, Court Receivership,  
Investment/Equity, 1031 Exchange  
Residential, Property Development  
and Vacation/Coastal Properties.

Licensed in Minnesota & Florida

Contact:

**Kurt Nowacki** Realtor®

**612.227.6163**

[kurt@rocksolidcos.com](mailto:kurt@rocksolidcos.com)

7078 E. Fish Lake Rd., Maple Grove, MN 55311 Main: 612.435.7770 Fax: 612.435.7771